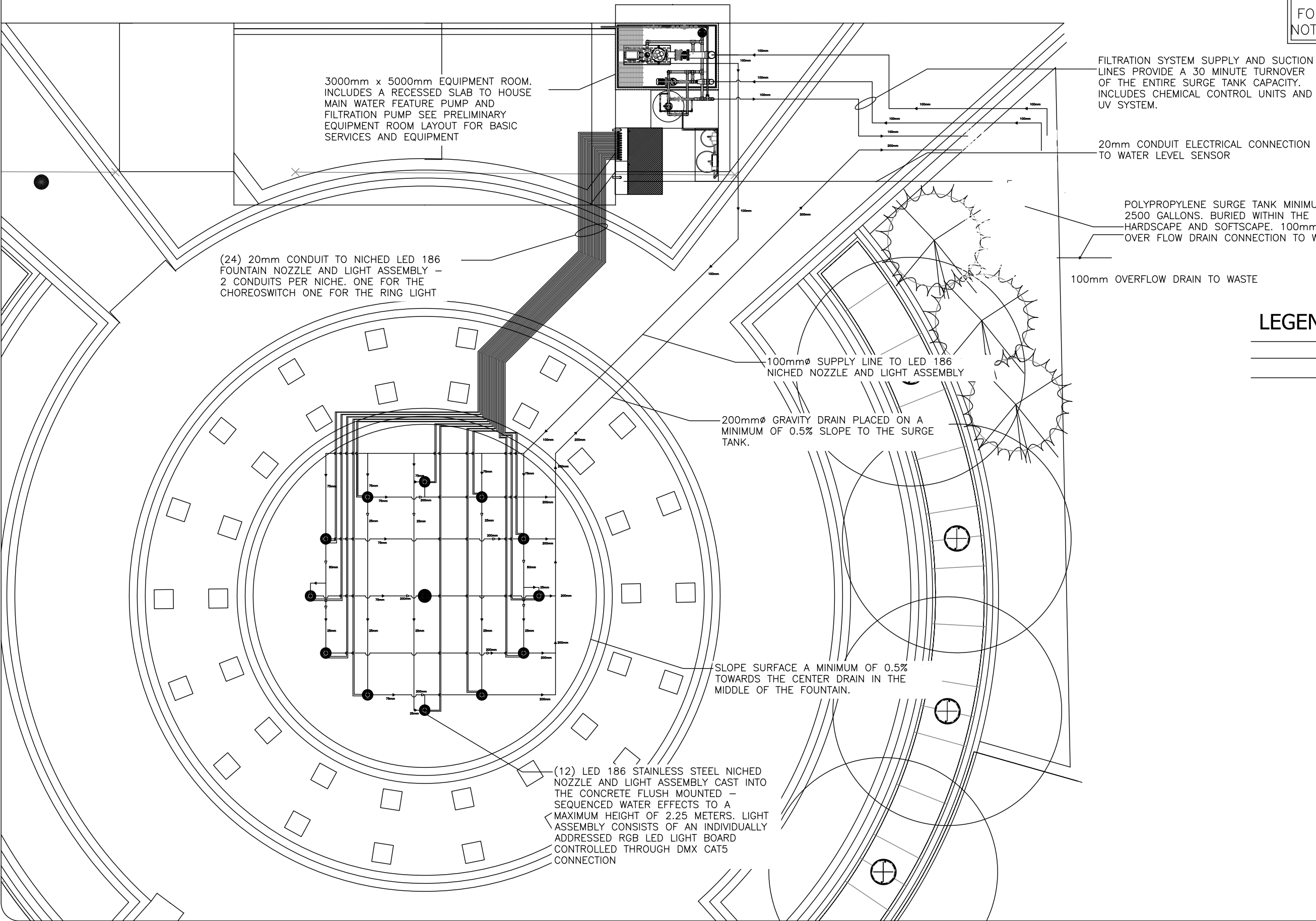


PRELIMINARY
 FOR DISCUSSION ONLY
 NOT FOR CONSTRUCTION



3000mm x 5000mm EQUIPMENT ROOM. INCLUDES A RECESSED SLAB TO HOUSE MAIN WATER FEATURE PUMP AND FILTRATION PUMP SEE PRELIMINARY EQUIPMENT ROOM LAYOUT FOR BASIC SERVICES AND EQUIPMENT

FILTRATION SYSTEM SUPPLY AND SUCTION LINES PROVIDE A 30 MINUTE TURNOVER OF THE ENTIRE SURGE TANK CAPACITY. INCLUDES CHEMICAL CONTROL UNITS AND UV SYSTEM.

20mm CONDUIT ELECTRICAL CONNECTION TO WATER LEVEL SENSOR

POLYPROPYLENE SURGE TANK MINIMUM 2500 GALLONS. BURIED WITHIN THE HARDSCAPE AND SOFTSCAPE. 100mm OVER FLOW DRAIN CONNECTION TO WASTE

100mm OVERFLOW DRAIN TO WASTE

(24) 20mm CONDUIT TO NICHED LED 186 FOUNTAIN NOZZLE AND LIGHT ASSEMBLY - 2 CONDUITS PER NICHE. ONE FOR THE CHOREOSWITCH ONE FOR THE RING LIGHT






100mm ϕ SUPPLY LINE TO LED 186 NICHED NOZZLE AND LIGHT ASSEMBLY

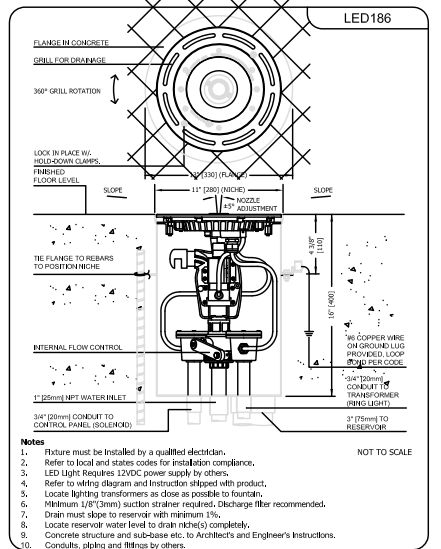
200mm ϕ GRAVITY DRAIN PLACED ON A MINIMUM OF 0.5% SLOPE TO THE SURGE TANK.

SLOPE SURFACE A MINIMUM OF 0.5% TOWARDS THE CENTER DRAIN IN THE MIDDLE OF THE FOUNTAIN.

(12) LED 186 STAINLESS STEEL NICHED NOZZLE AND LIGHT ASSEMBLY CAST INTO THE CONCRETE FLUSH MOUNTED - SEQUENCED WATER EFFECTS TO A MAXIMUM HEIGHT OF 2.25 METERS. LIGHT ASSEMBLY CONSISTS OF AN INDIVIDUALLY ADDRESSED RGB LED LIGHT BOARD CONTROLLED THROUGH DMX CAT5 CONNECTION

LEGEND

-  CONDUIT
-  DRAIN / SUCTION LINE
-  WATER SUPPLY LINE
-  DSA-600 DRAIN FITTING
-  LED 186 NICHED NOZZLE AND LIGHT ASSEMBLY



- Notes**
1. Fixture must be installed by a qualified electrician.
 2. Refer to local and states codes for installation compliance.
 3. LED Light Requires 12VDC power supply by others.
 4. Refer to wiring diagram and instruction attached with product.
 5. Locate lighting transformers as close as possible to fountain.
 6. Minimum 1/8\"/>

Foot Friendly Sequencing Deck with 12VDC / 30W RGB LED
 ITEM NO. NOT TO SCALE